

# Ohio Aggregates & Industrial Minerals Association

Annual Meeting 2015



## OHIO DEPARTMENT OF TRANSPORTATION

Rich Winning, Deputy Director  
Division of Finance  
November 2015

# Overview

- Revenue Forecasts & State Motor Fuel Trends
- Federal Revenue
  - U. S. Consumption Trends
  - Highway Trust Fund
  - Current Funding Proposals
- Transportation Revenue & Program Summary
  - ODOT Capital Program Forecast



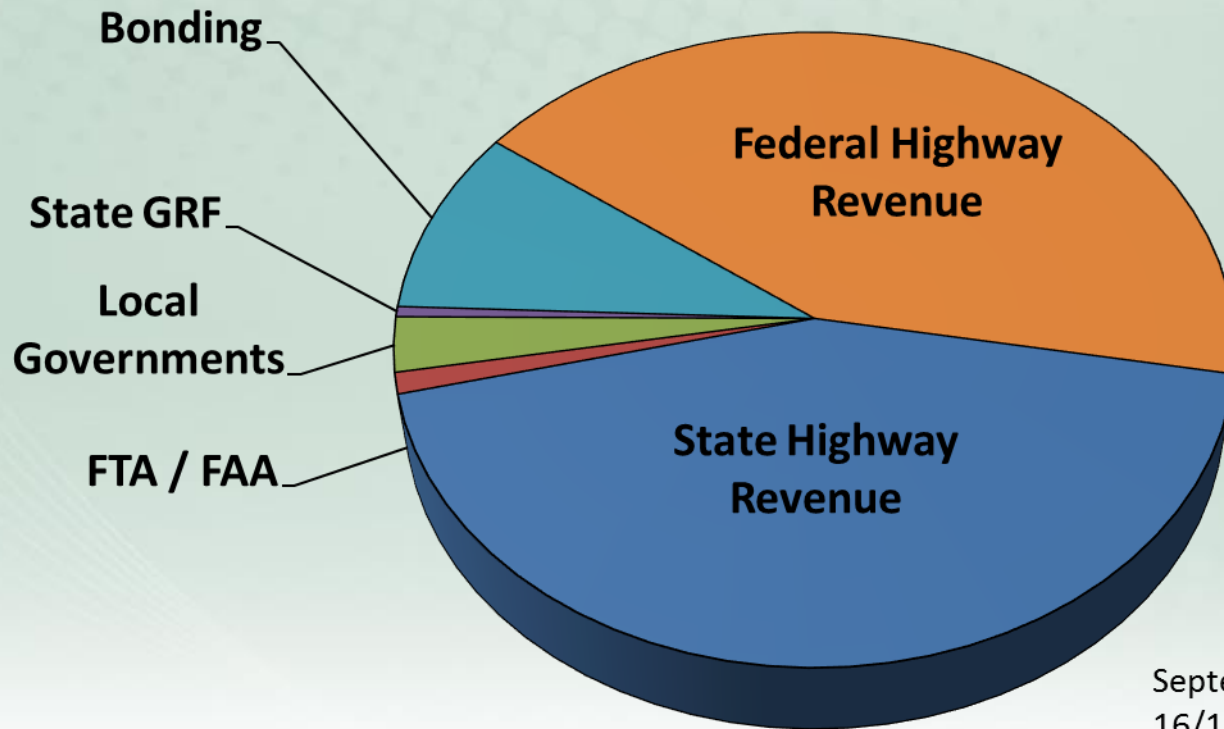
# **Revenue Forecasts & State Motor Fuel Trends**

# Revenue Forecasts 2016 - 2019

- **State**
  - 1% Growth for 2016 - 2017
  - Flat (0% Growth) for 2018 - 2019
- **Federal**
  - Flat (0% Growth) at FY 2015/MAP-21 Levels for 2016 – 2019

# All Revenue Sources

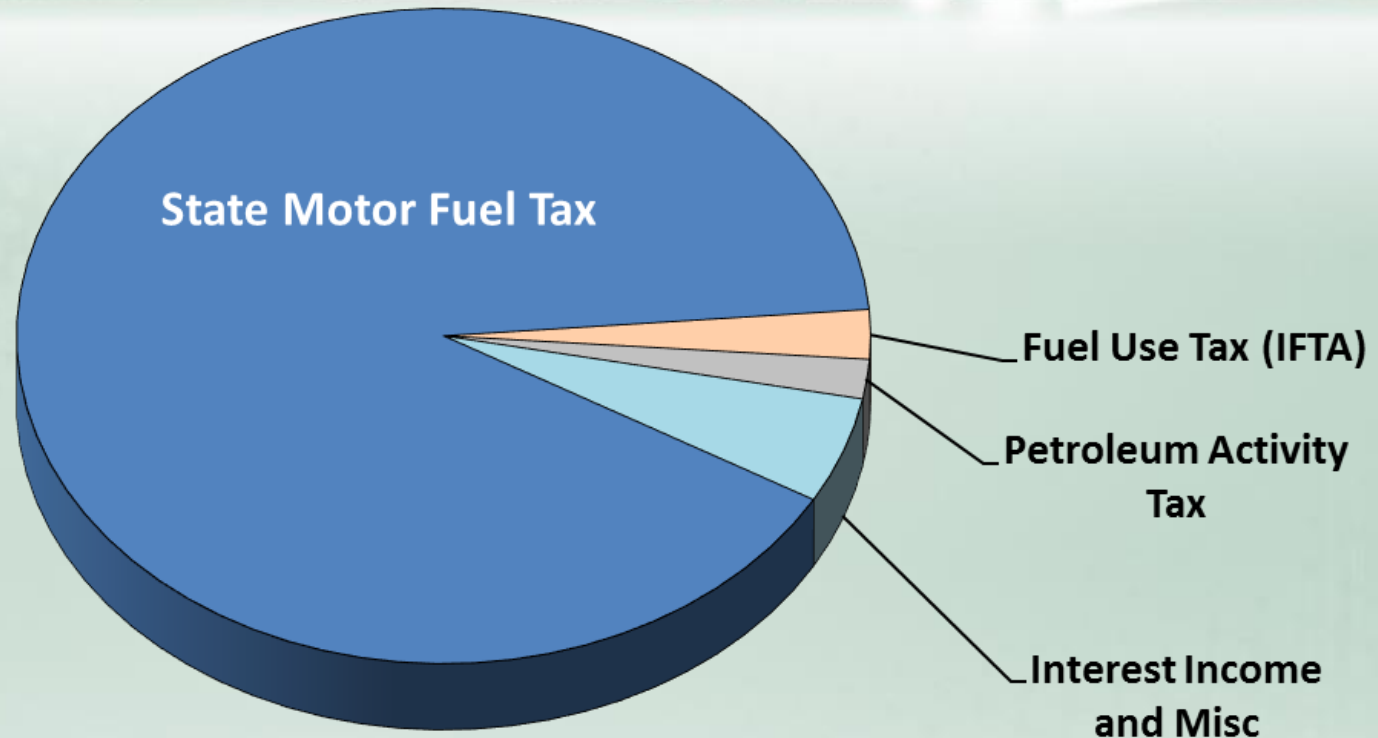
## FY16 Revenue Sources \$2.93 B Total



September 2015 Proforma &  
16/17 Biennium Budget

# State Revenue Sources

## FY 16 – Estimates

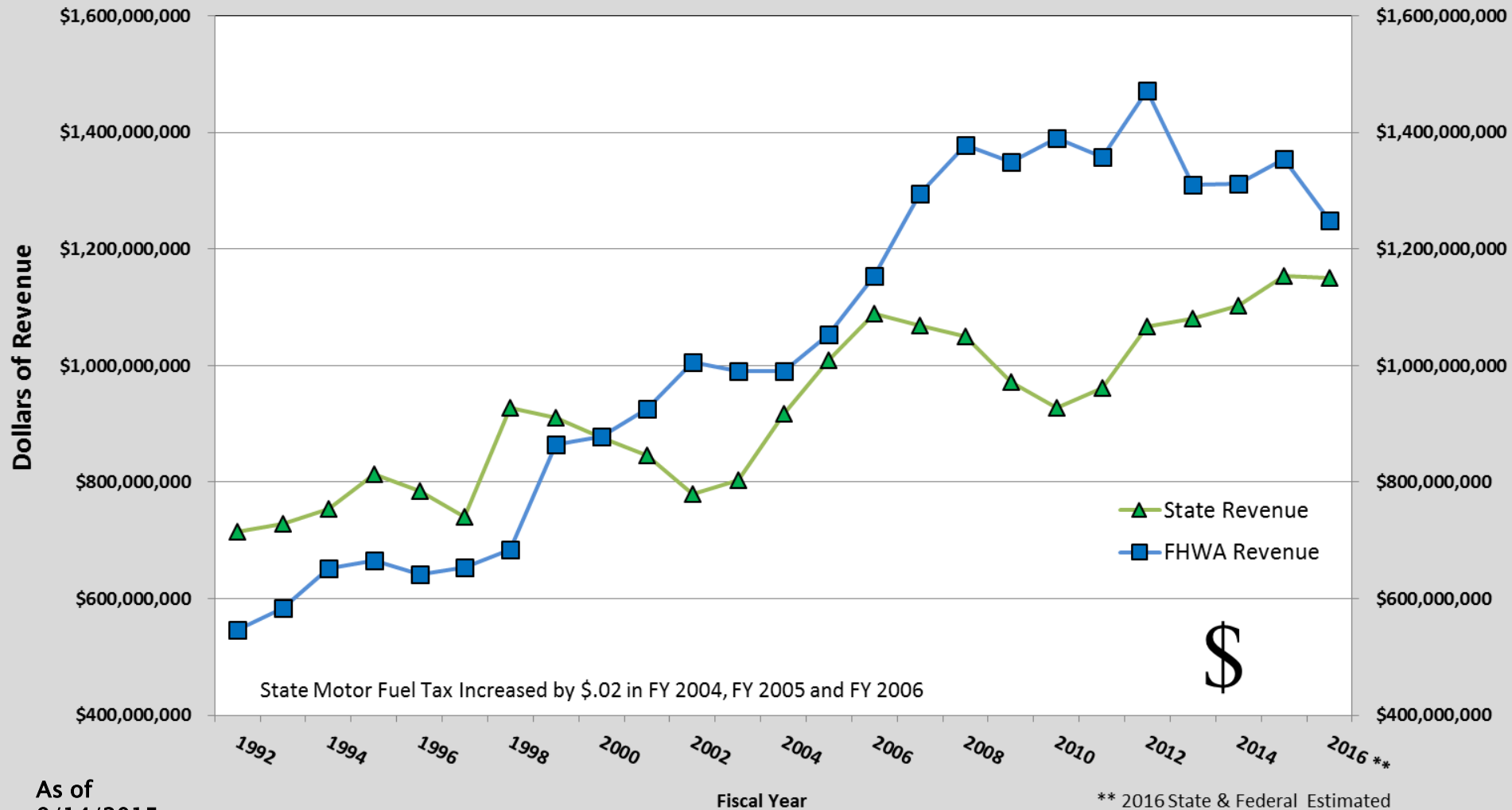


FY16 estimates		
State Motor Fuel Tax	\$1,163 m	90.5%
Commercial Truck Registrations (IRP)	0 m	0%
Fuel Use Tax (IFTA)	31 m	2.4%
Petroleum Activity Tax	25 m	1.9%
Interest Income and Misc	68 m	5.2%
	\$1,287 m	100.00%



# Comparison of FHWA Revenue to State Revenue

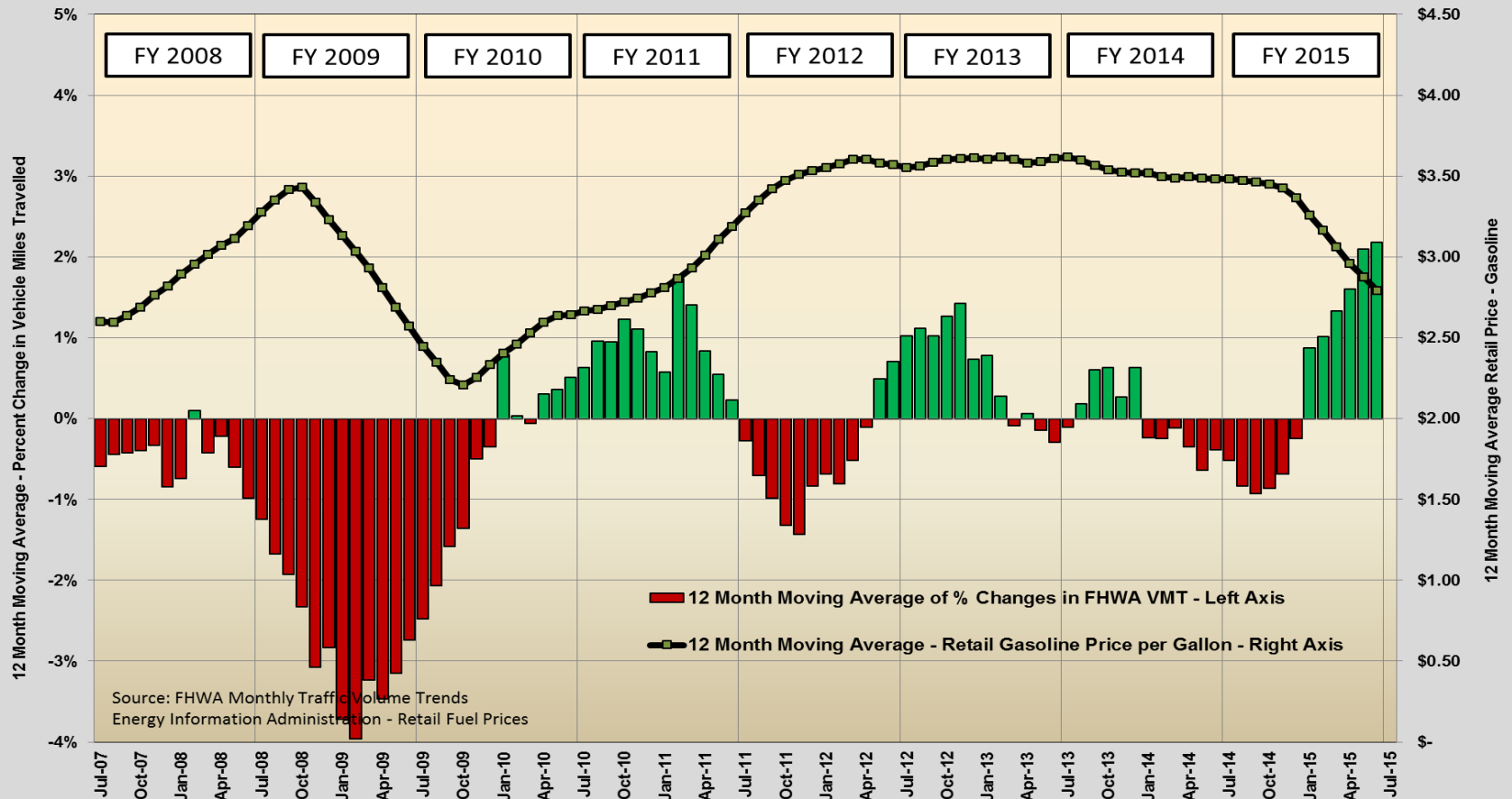
Fiscal Years 1992 to 2016



# Ohio VMT vs Monthly Gasoline Price

**12 Month Moving Averages:**

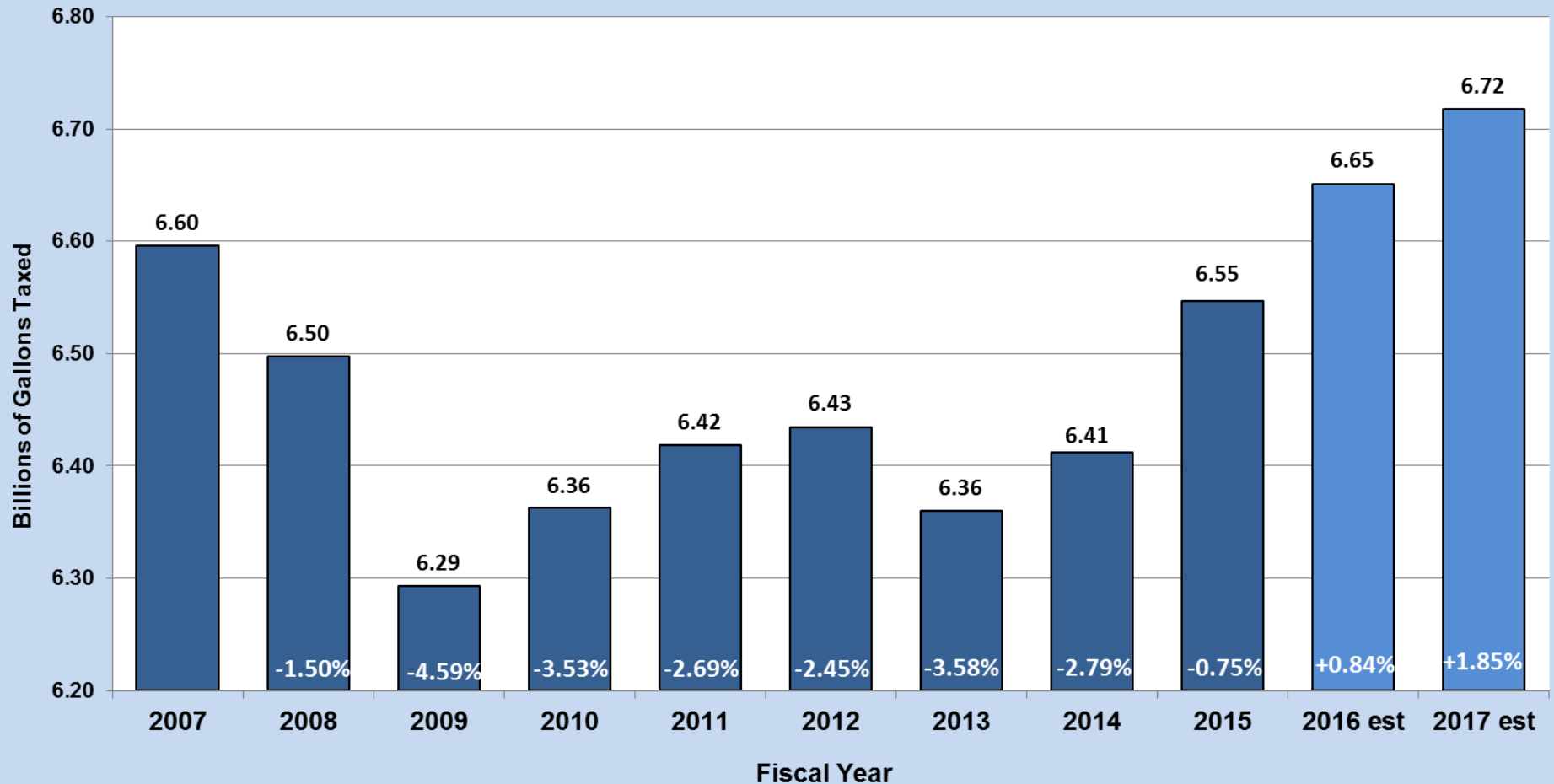
**Percentage Change in FHWA - Ohio VMT Vs. Monthly Average Price of Gasoline**  
FY 2008 to FY 2015





# Ohio Motor Fuel Tax

Historical Gallons Taxed with FY 2016 / 2017 Estimates

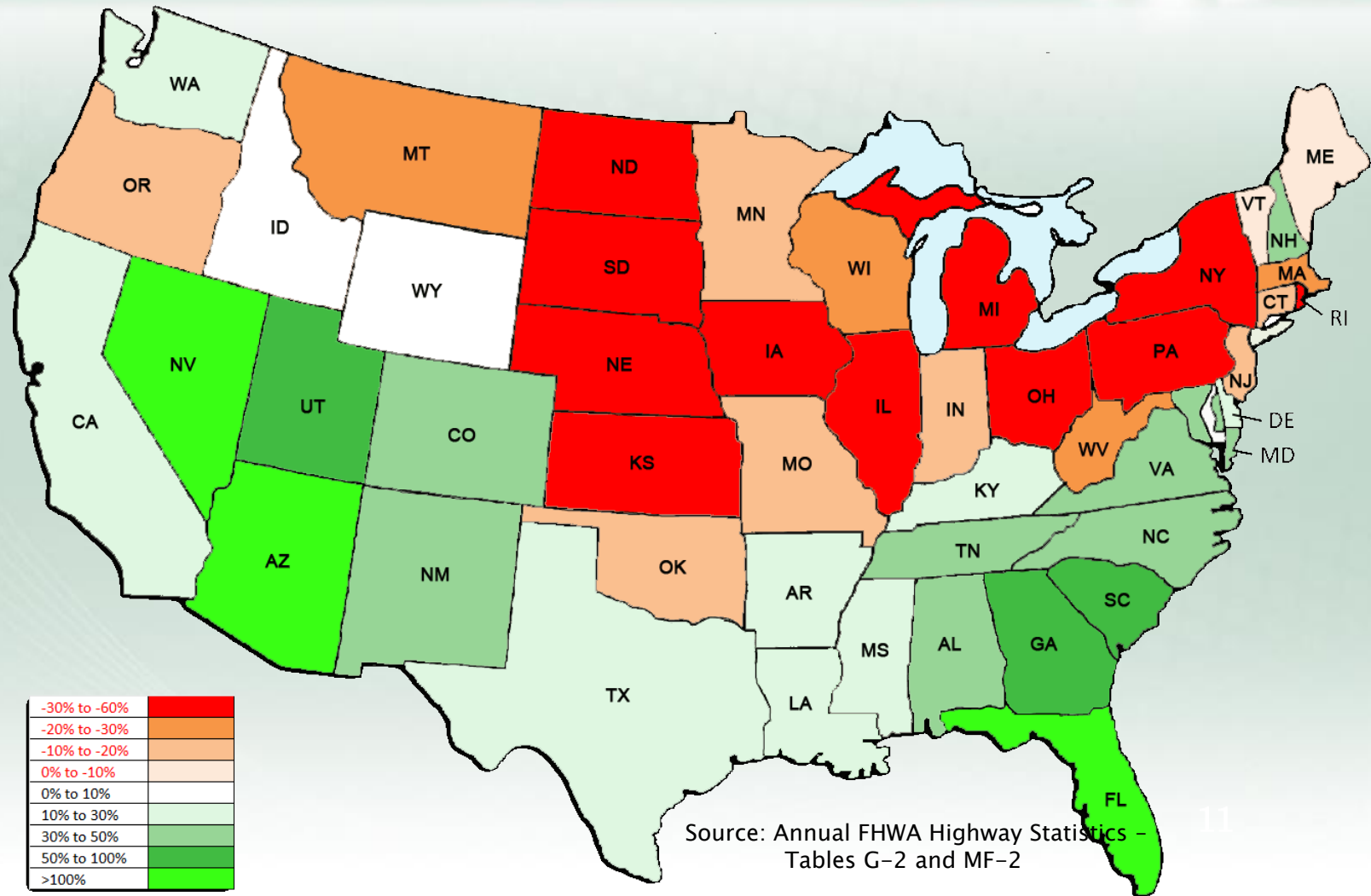




# Federal Revenue *Highway Trust Fund*

# U.S. Consumption Trend 2010

Change in % share of U.S. Motor Fuel Consumption since 1950



# Federal Highway Trust Fund

## General Fund Transfers since 2008

To Highway Trust Fund*			
FFY	Law Enacted	FROM	
		General Fund	Leaking Underground Storage Tank Fund
2008	9/15/2008	\$8.02 B	—
2009	8/7/2009	\$7.00 B	—
2010	3/8/2010	\$19.50 B	—
2012	7/6/2012	\$17.58 B	\$2.4 B
2014	8/8/2014	\$9.77 B	\$1 B
2015	7/31/2015	\$8.07 B	—
TOTAL		\$69.93 B	\$3.4 B

\* Includes both Highway and Mass Transit accounts of the HTF, after MAP-21 sequestrations.

*Note:* CBO has indicated that keeping pace with both the Highway Account and Mass Transit Account spending would require a \$0.10 to \$0.15 increase in Federal Motor Fuel Tax.

# Federal Highway Trust Fund

## **Short-term Extensions of the 2005 SAFETEA-LU Law**

- SAFETEA-LU expired 9/30/09
- 10/1/2009 – 7/6/2012 (10 different short-term extensions)
- MAP-21 in effect from 7/6/2012 to 9/30/2014

## **Short-term Extensions of the 2012 MAP-21 Law**

- 10/1/2014 – 5/31/2015 8 months
- 6/1/2015 – 7/31/2015 2 months
- 8/1/2015 – 10/29/2015 3 months
- 10/30/2015 – 11/20/2015 3 weeks

# Legislative Proposals

## GROW AMERICA

- *Six Years of Funding Certainty*
- *Increases Transportation Investment by 45%*
  - *\$317 billion Highways*
  - *\$115 billion Transit*

## DRIVE ACT

- *Six Years of Funding*
  - *1<sup>st</sup> 3-years funded*
- *Increases Transportation Investment by 12.5%*
  - *\$273.4 billion Highways*
  - *\$74.9 billion Transit*
- *Passed by Senate*

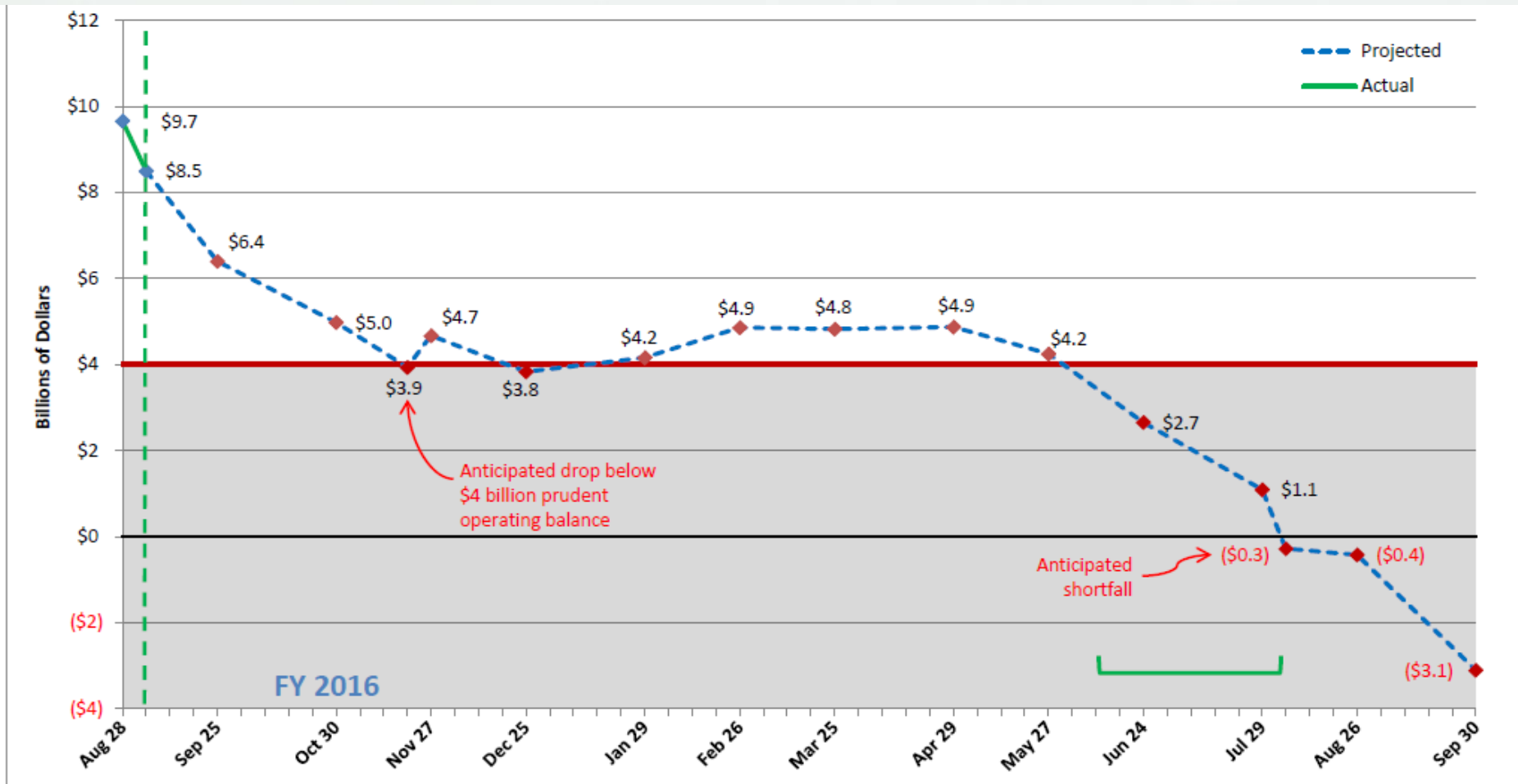
## STRR ACT

- *Six Years of Funding*
  - *Authorization levels set for 6 years*
  - *NO Trust fund revenues identified*
  - *Limitation on years 2019 - 2021*
- *Increases Transportation Investment by 12.5%*
  - *\$261 billion Highways*
  - *\$68.6 billion Transit*
- *Passed by House T&I Committee*



# Highway Trust Fund Projected Cash Balances

Highway Account of the Highway Trust Fund (includes FHWA, FMCSA & NHTSA), as of 9/4/2015



# Proposals to Fix Highway Trust Fund Solvency

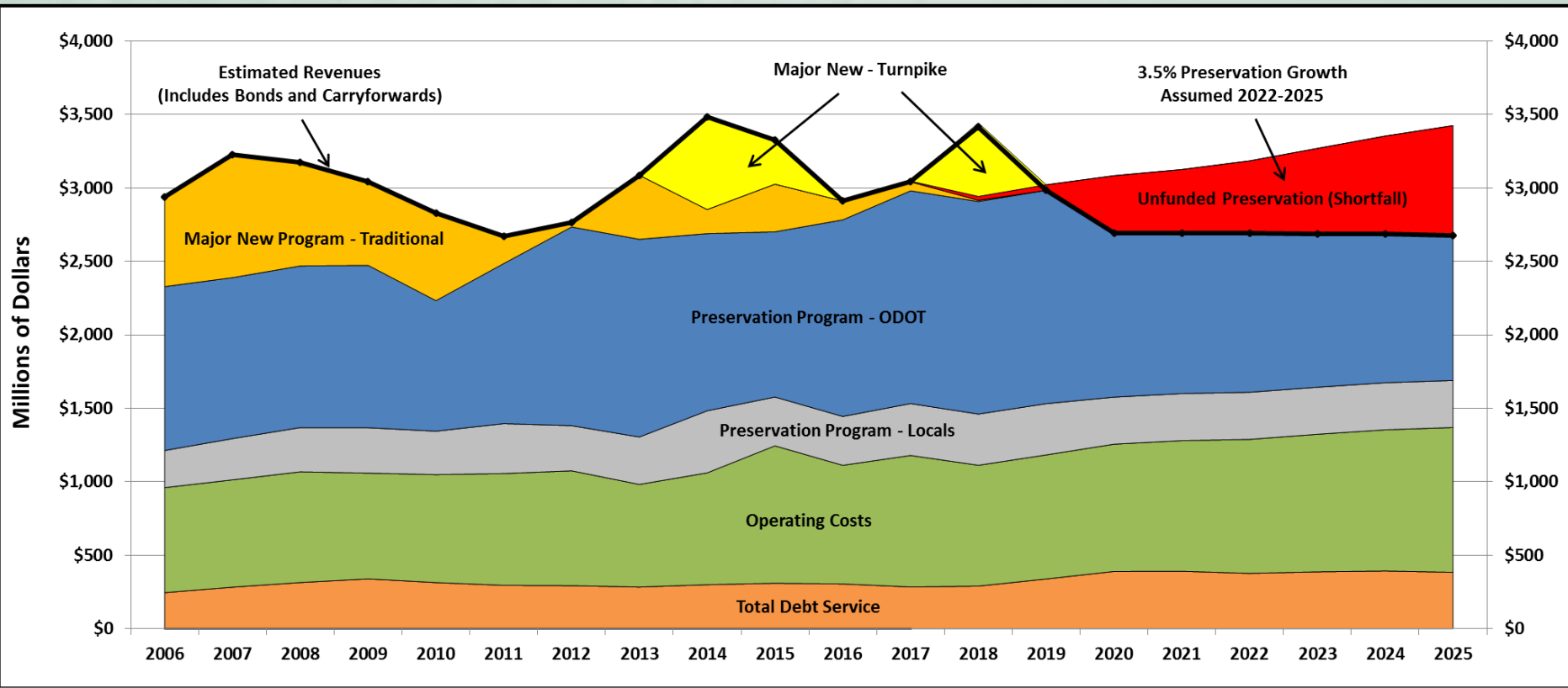
- Continue General Fund Transfers
- Federal Motor Fuel Tax Increase
- Repeal Diversions to the mass transit account and other local spending projects
- Downsize the Federal Role in Transportation
- Tax on Multinational Companies' Overseas Earnings (Repatriation)



# **Transportation Revenue & Program Summary**

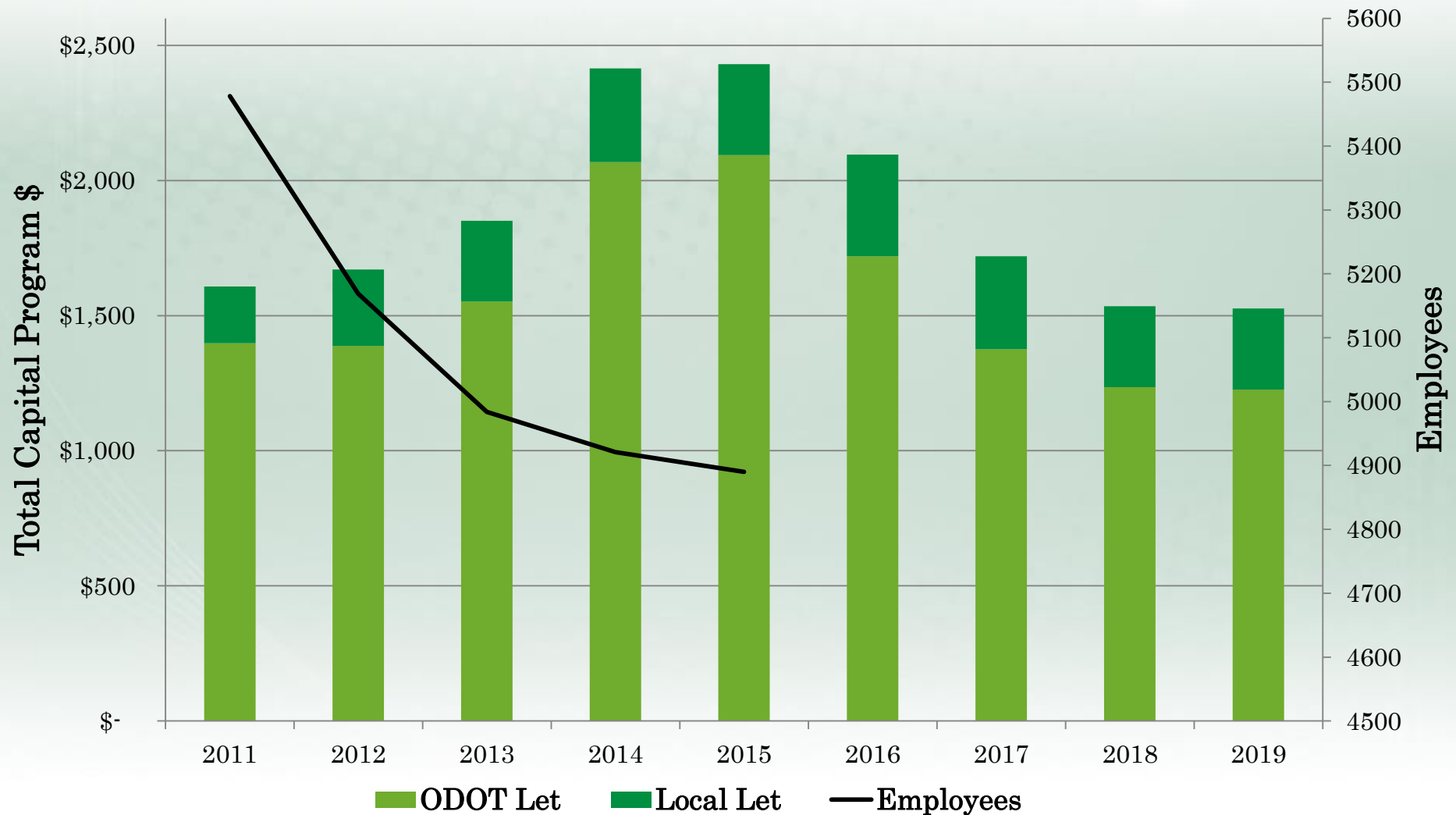
# Transportation Revenue and Program Summary

State Assumptions		Federal Assumptions
Tax Rates	<i>State Motor Fuel Tax:</i> 1% Growth for FY 2016 & FY 2017 Flat for FY 2018 – FY 2025	<i>Federal Revenue:</i> Flat for FY 2016 – FY 2025



Preservation Program – Locals includes: MPO, CEAO and other funding provided to local governments  
 Preservation Program – ODOT includes: Pavement, Bridges, Safety, and Statewide ODOT/Federal

# ODOT 2011 – 2019 Program





**Questions?**